

Finally, a relationship with
freedom to breathe.



PARI BOY® SX Family

- **Powerful Compressor** for short inhalation times
- Integrated **PIF Control** teaches good breathing practice
- The **size of droplets** can be selected according to therapeutical needs

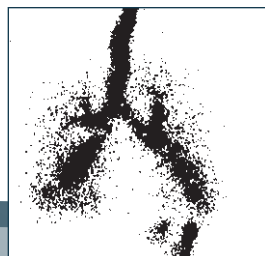
PARI PIF CONTROL – Training tool for the ideal breathing manoeuvre



- ➔ PIF Control (PIF = Peak Inspiratory Flow) recognises if the patient is breathing in too quickly and helps train them to breathe in more slowly.
- ➔ Breathing in slowly results in greater, more uniform deposition of the inhaled medium in the lungs (Fig. 1)
- ➔ Should the patient perceive a soft resistance, this is an indication that they should breathe in more slowly.

**PIF Control is integrated in the PARI BOY® SX,
PARI BOY® SX Year Pack and PARI LC SPRINT® STAR**

Rapid inspiration



Slow inspiration

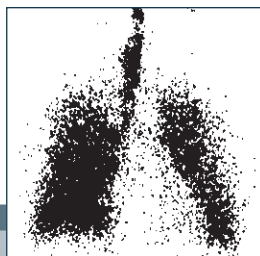


Fig. 1: Gamma camera image after the slow and rapid inhalation of a radio-aerosol in an asthma patient (Laube et al., 1992): breathing in slowly results in greater, more uniform deposition of the inhaled medium in the lungs



PARI Export Service Center
+49 (0) 8151 279-220

Give us a ring ...



... if you have any questions about
using, handling, cleaning or maintenance



... if you need spare parts or want to
know where you can order them



PARI GmbH
Specialists in effective inhalation
Moosstrasse 3 · D-82319 Starnberg
Telefon +49 (0) 81 51/2 79-0
Fax +49 (0) 81 51/2 79-101



You can find PARI on the internet:
www.pari.de
E-Mail: info@pari.de



Finally, a relationship with freedom to breathe.



© PARI GmbH Spezialisten für effektive Inhalation 085D0127-A- 06/2012

PARI BOY® SX Family

- **Powerful Compressor** for short inhalation times
- Integrated **PIF Control** teaches good breathing practice
- The **size of droplets** can be selected according to therapeutic needs

PARI JuniorBOY® SX

The smart one – variable and gentle for the smallest patients

Children are not little adults. The PARI JuniorBOY® SX is therefore a good choice for inhalation therapy for babies as young as 1 month old and infants. BABY Mask and BABY Bend allow a relaxed and comfortable inhalation while sitting or lying. The PARI LC SPRINT® Nebuliser generates very small droplets for the smaller airways of the younger patients.

Ideal for the smallest patients

- ➔ Short inhalation time – **less than 7 min.** for 2.5 ml Inhalation Solution*
- ➔ Equipment for babies from the first months of age: BABY mask, BABY bend
- ➔ Effective inhalation with PARI LC SPRINT® Junior Nebuliser and fine droplets for the smaller airways of babies and infants
- ➔ No specific inhalation technique required

* Salbutamol

Aerosol characteristics:

Mass Median Diameter: 2.9 µm
Mass percentage below 5 µm: 76 %
Total Output Rate: 370 mg/min
Order no. **085G3301**

Inspiratory flow 12 l/min (children), measurement with Malvern Mastersizer X (calculated according to the Fraunhofer model) at 23 °C and 50 % relative humidity. Nebulised medium: 0.9 % NaCl (5 ml).

PARI TurboBOY® SX

The allrounder – easy, fast, and suitable for nearly everyone.

The appropriate inhalation device for almost every one older than 4 years. The PARI LC SPRINT® Nebuliser ensures efficient lung deposition and correspondingly short inhalation times. Inhalation is easy, even for children.

Ideal for everyone over 4 years old

- ➔ Short inhalation time – **less than 5 min.** for 2.5 ml Inhalation Solution*
- ➔ PARI LC SPRINT® Nebuliser ensures efficient lung deposition even with short inhalation times
- ➔ The nebuliser is easy to use – even for the youngest children
- ➔ **New:** With masks for children and adults

* Salbutamol

Aerosol characteristics:

Mass Median Diameter: 3.5 µm
Mass percentage below 5 µm: 67 %
Total Output Rate: 600 mg/min
Order no. **085G3201**

Measured with the Malvern MasterSizer X (calculated according to Fraunhofer-model) at 23 °C and 50 % relative humidity. Nebulised medium: 0.9 % NaCl (5 ml). Inspiratory flow 20 l/min.

PARI BOY® SX

The perfectionist – adaptable, targeted and designed for particularly exacting requirements.

Well fitting for those older than 4 years with particularly exacting requirements. PARI LC Interrupter, PIF Control and additional nozzle inserts are included. The PARI LC SPRINT® Nebuliser allows very short inhalation times. Thanks to different nozzle inserts the drug can be transported precisely to the desired location in the lung.

Ideal choice with extra equipment

- ➔ Short inhalation time – **less than 5 min.** for 2.5 ml Inhalation Solution* (blue insert)
- ➔ Selectable aerosol spectrum allows the targeted use for the central or peripheral region of the lung
- ➔ Optional intermittent nebulising for combined physiotherapy
- ➔ Optimal breathing manoeuvre – due to the integrated PIF Control

* Salbutamol

Aerosol characteristics:

Blue nozzle insert:
Mass Median Diameter: 3.5 µm
Mass percentage below 5 µm: 67 %
Total Output Rate: 600 mg/min

Red nozzle insert:
Mass Median Diameter: 2.2 µm
Mass percentage below 5 µm: 89 %
Total Output Rate: 450 mg/min
Order no. **085G3001**

Measured with the Malvern MasterSizer X (calculated according to Fraunhofer-model) at 23 °C and 50 % relative humidity. Nebulised medium: 0.9 % NaCl (5 ml). Inspiratory flow 20 l/min.

